



Zona-Lize Hayward
Principal Property Practitioner
Registered with PPRA (FFC 202 322 464 4)
0834525588
zhayward@ikonic.co.za

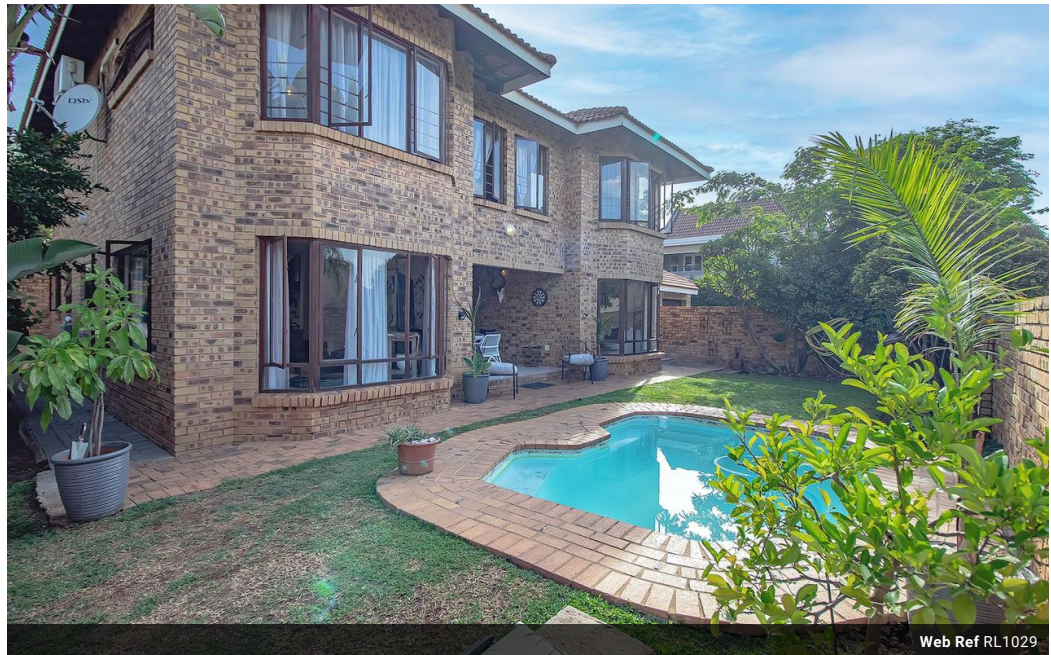


Martin Hayward
Principal Property Practitioner
Registered with PPRA (FFC 202 322 311 5)
0834525599
martin@ikonic.co.za

Contact Head Office

083 452 5599

Silver Lakes Golf Estate



Web Ref RL1029



R4,410,000

3 2.5 2

Monthly Bond Repayment R45,519.51
Calculated over 20 years at 11% with no deposit.

Transfer Costs R333,109.00 **Bond Costs** R57,265.00
These calculations are only a guide. Please ask your conveyancer for exact calculations.

Monthly Levy R2,710 **Monthly Rates** R2,300

Meticulously Maintained Family Home in Silver Lakes Golf Estate

A north-facing low maintenance home designed for easy upkeep, reducing the time and effort required for maintenance tasks. A family home that receives ample natural light throughout the day, creating a bright and welcoming atmosphere. Situated on a quiet street, providing a peaceful and serene living environment. The property includes a private patio that offers views of a sparkling pool and established garden. This outdoor area provides a tranquil setting for relaxation and entertainment.

The interior features spacious and flowing open-plan reception areas, allowing for versatile use of the space. This layout can create a sense of openness and connection between different living areas. A well-equipped kitchen provides ample workspace and cupboards, making it convenient for cooking and storage. Additionally, there is a...

Features

Pets Allowed	Yes			
Interior		Exterior		Sizes
Bedrooms	3	Garages	2	Floor Size
Bathrooms	2.5	Security	Yes	Land Size
Recep. Rooms	4	Dom. Accom.	0.5	251m ²
Studies	1	Pool	Yes	500m ²

